

24-132-1

STRETCH KIT

WILL FIT YAMAHA® DRIVE®

INSTALLATION INSTRUCTIONS



Will Not Work On Yamaha® AC Electric Cars

INCLUDED:

Thread locking adhesive
Frame extensions (2)
Side Floor Supports (2)
Center Floor Support
Fwd/Rev extension harness
Key switch extension harness
Reverse buzzer extension harness
Brake switch extension harness
Floor Mat
Accelerator switch extension harness
Extended brake cable
Driver tail light extension harness
Pass tail light extension harness

Light kit power wire extensions
Cup holder
Seat frame closeouts (2)
Rear grab bar
Seat frame supports (2)
Rear Threshold
Front Threshold
Rear Trim Cover
Floor cover plate
Floor mat retainers (2)
Hardware Packs 1-6

TOOLS NEEDED:

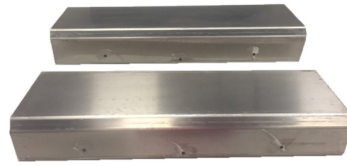
Mechanic's Tool set
Cordless Drill
Chalk line
Tape measure
Rivet Gun
Sawzall/Skilsaw
8-10" Sawzall bi-metal Blade
Floor jacks
Jack stands
Speed square
Marking pen
Drill Set



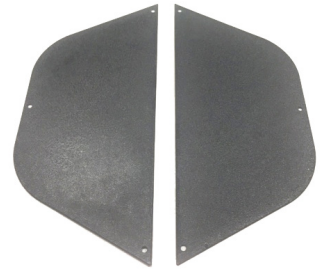
Floor Mat



Cup holder



Side Floor Supports



Seat Frame Closeouts



Rear Grab Bar



Seat Frame Supports



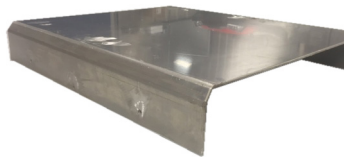
Rear Threshold



Front threshold



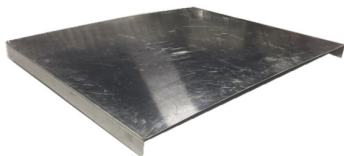
Rear Trim Cover



Center Floor Support



Floor mat retainers



Floor cover plate



Frame extensions



Key switch
extension harness



Reverse buzzer
Extension Harness



Brake switch
extension harness



Accelerator switch
extension harness



Driver tail light
extension harness



Extended Brake Cable



Passenger tail light
extension harness



Light kit power
wire extensions

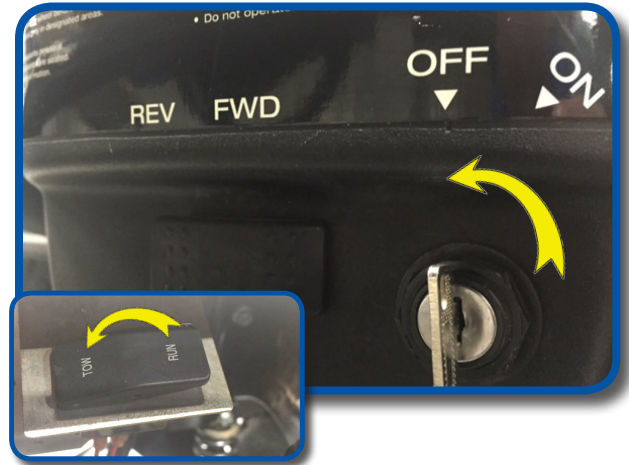


Forward/Reverse
Extension harness

We recommend professional installation. If you choose to not have this product installed by a professional, we highly recommend that you exercise caution, care, and patience when installing this product as it involves drilling holes into your cart's body.

1

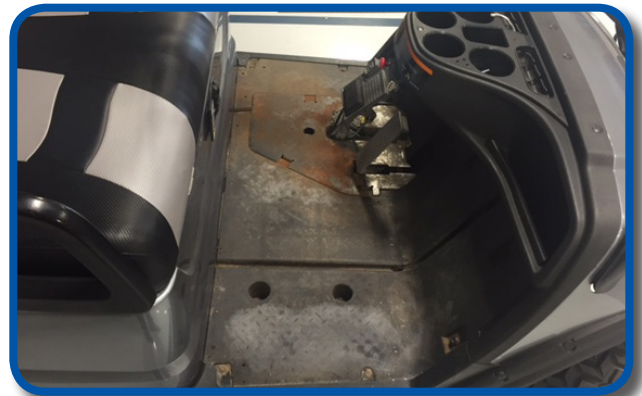
Switch key to OFF position. Place TOW/RUN switch to TOW. It is not required to remove the batteries but you do need to disconnect them. Disconnect the main negative and then the main positive.



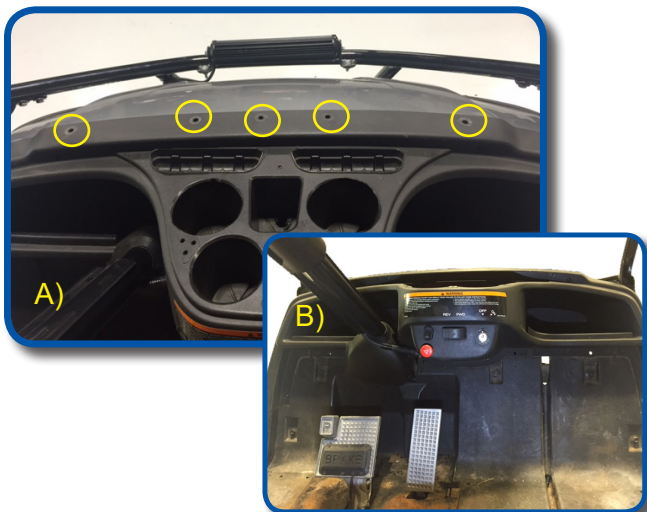
Detach canopy by removing 8 bolts in struts.

2

Remove factory floor mat, retain push rivets only. A new full mat is provided with your kit.



3



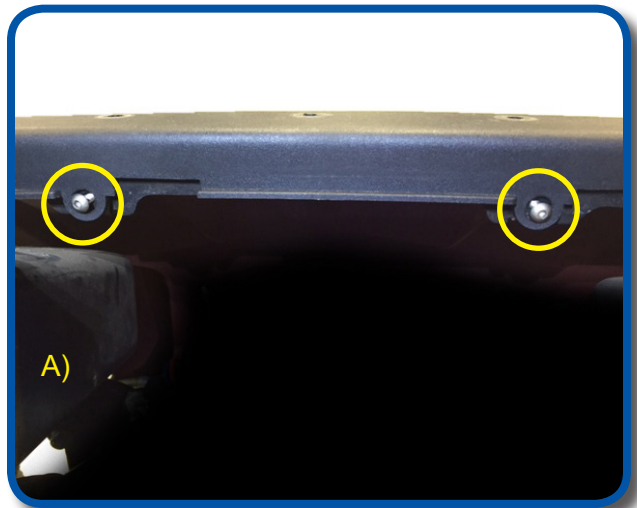
A) Remove and retain upper rivets in front dash as shown.
B) Remove lower rivets as well and retain all hardware.

4

5

A) Use a 3mm allen head wrench to take out screw at front of cup holder. Lift up from same location to remove cup holder from dash and retain.

B) Remove and retain rivet at column base cover and slide up column and out of way.



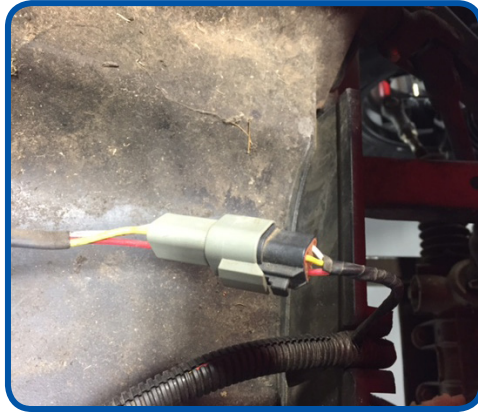
A) Remove and retain the two screws located under the cup holder mounting location.

6

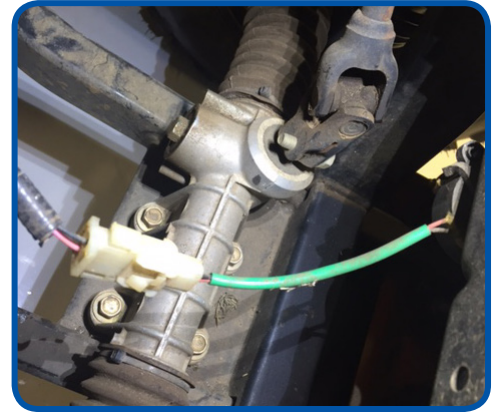
B) Remove and retain the screw located on each side of the center console.



A) Unplug harness from key switch



B) Unplug harness from Forward/Reverse switch

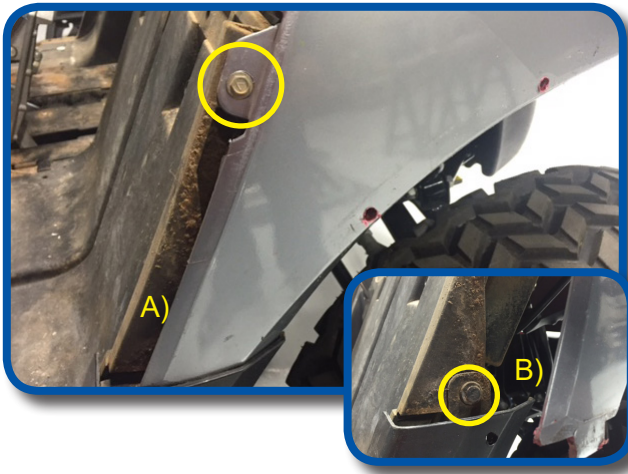


C) Unplug harness from Reverse buzzer.



Disconnect any other accessories you may have. Such as light kits, volt meters, etc. There are rear light kit extensions included in this kit, you will need to unplug your light harness from the rear and pull harness to the front. Remove and retain dash.

Do NOT remove front cowl or front struts. This kit does not require them to be removed.

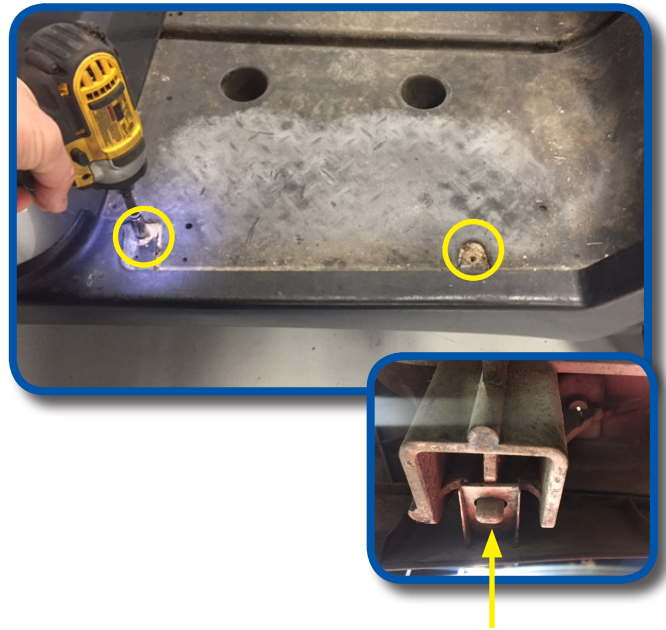


A) Remove and retain screw from each side of cowl located above side skirt.

B) With cowl now loose enough, remove and retain rivet holding top portion of side skirt.

10

Side skirts are held in place by two screws on top and three tabs under cart. Remove and retain side skirts and screws.



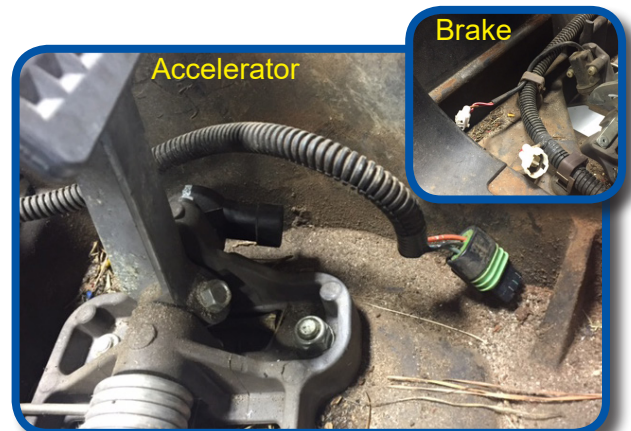
11

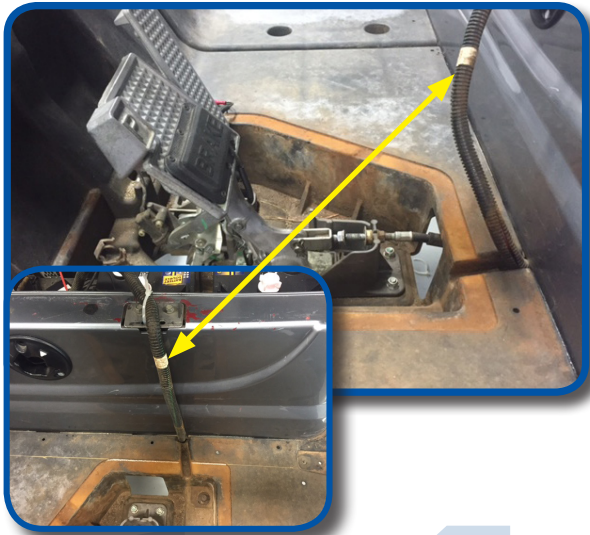
Remove and retain brake access cover.



12

Unplug accelerator and brake switch from main harness. If you have a light kit brake pad installed unplug it from the light harness.



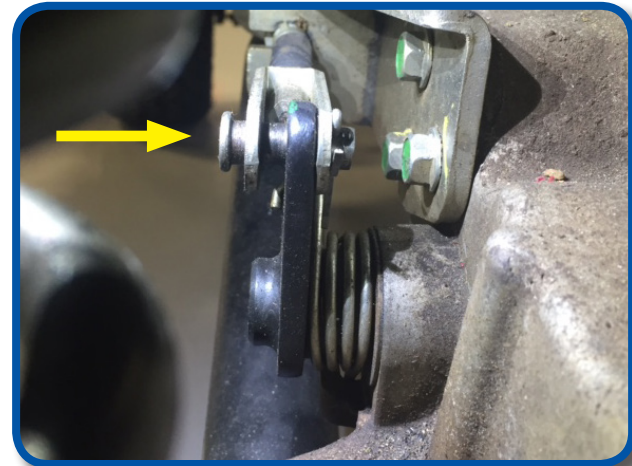
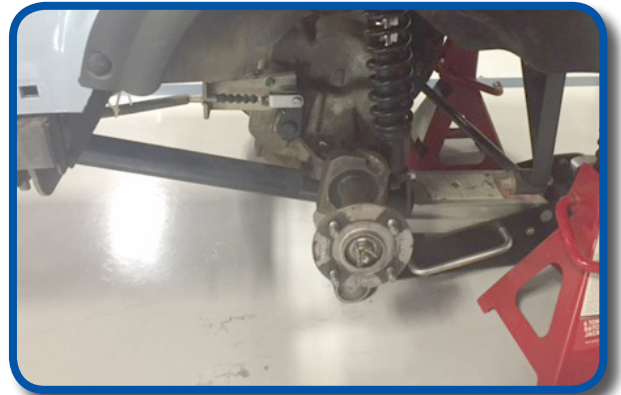


Now that main harness is free pull it through brake access panel towards rear as shown.

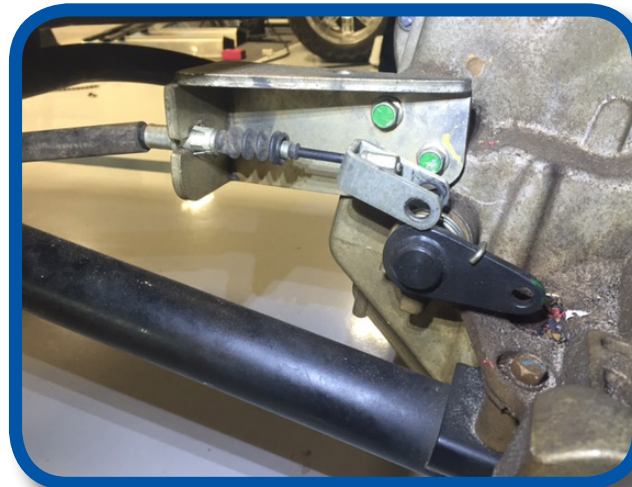
Do NOT pull harness into battery box, instead zip tie harness to front seat hinge bracket as shown.

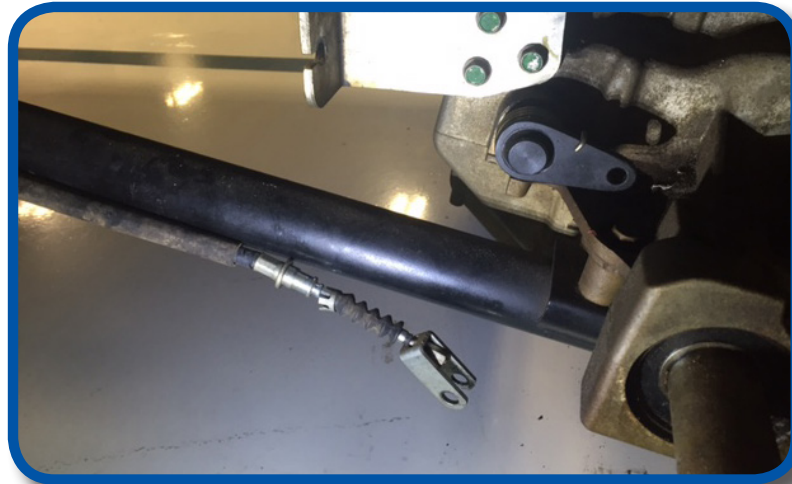
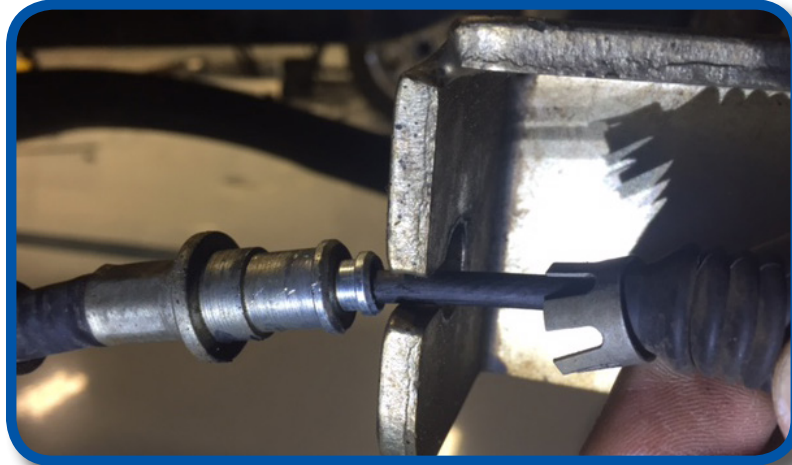
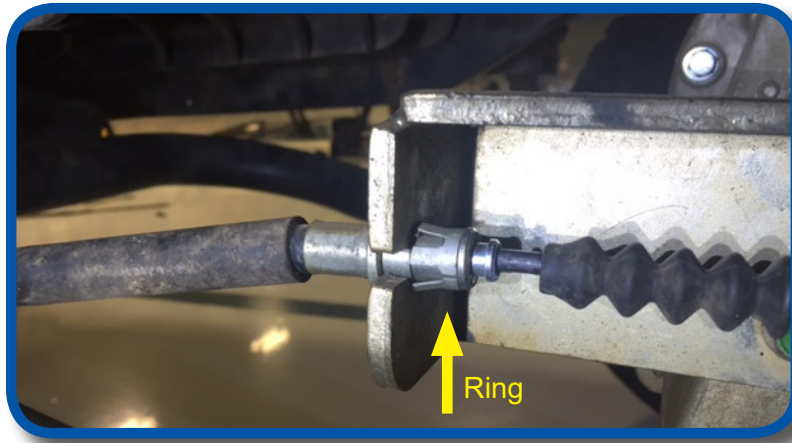
NOTE: To remove brake line from brake assembly you will need to detach the rear first. This will give you enough slack to remove front.

Jack rear of cart up and remove driver side tire.



Remove and retain cotter pin from rear mount.



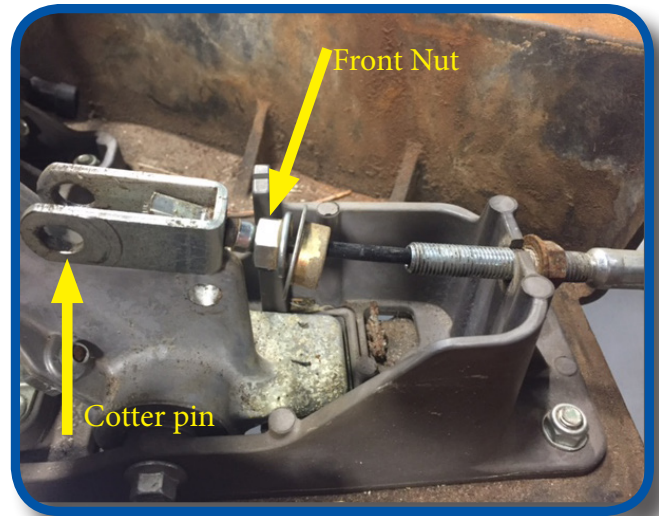


16

Now loosen retainer ring and slide cable through cable mount opening.


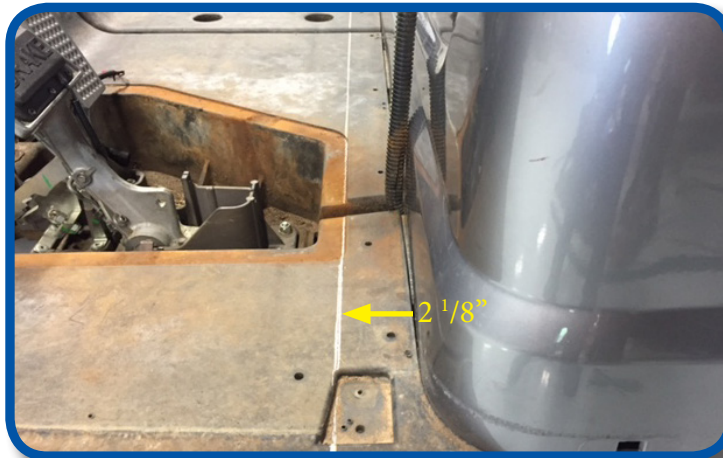
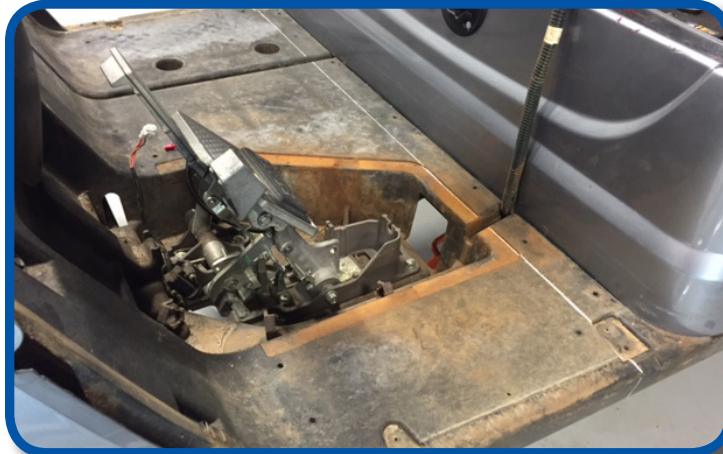
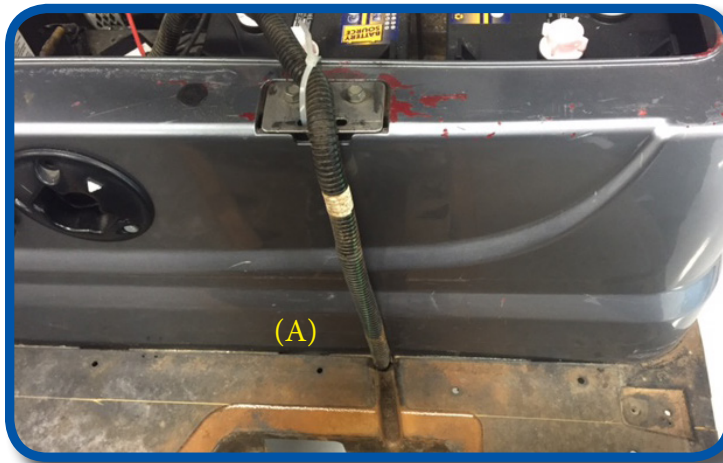
17

Now that rear of cable is removed loosen front nut with a 14mm wrench. Remove and retain cotter pin from brake pedal as shown. Removal of brake sleeve may be needed to accomplish this.



- # 18
- A) By removing rear cable first you now have enough slack to pull excess to front as shown.
 - B) Push brake cable towards rear of cart and slide out of mount by way of slimmer raw cable.

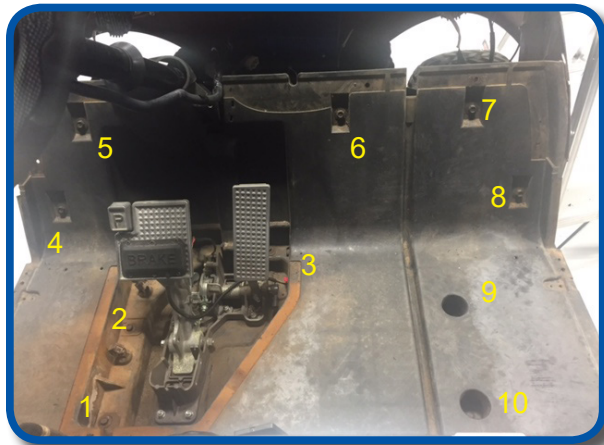




Make a cut line that is approximately $2\frac{1}{8}$ " off rear body. Use a chalk line or straight 6' level to ensure line is true. Notice the line is even with the rear indentation for the brake access cover. (A) Be sure cut line is exactly as shown. Side skirts will be cut later.

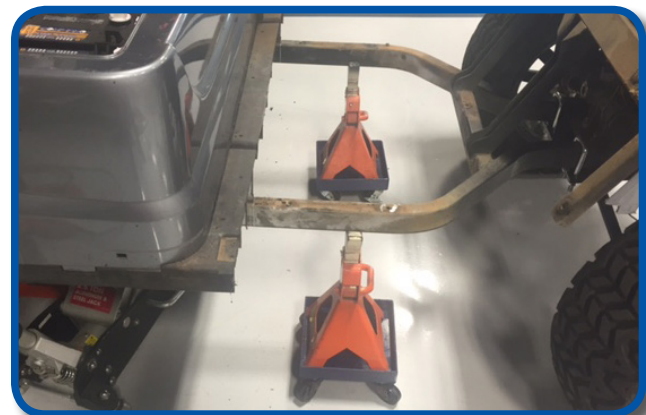
Before cutting car check again for any hidden harnesses, LED light strips, speaker wire, etc that can be damaged if cut.

Using a sawzall or skil saw cut plastic underbody only. Do **NOT** cut into frame until after STEP 22.



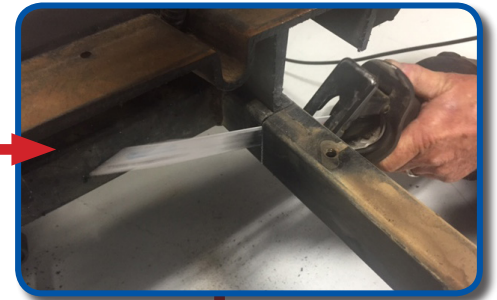
Detach front underbody by removing 10 bolts as shown using a 12mm socket. Retain hardware. Underbody is now free from frame, lift out of place and retain.

IMPORTANT: Before cutting frame place jack stands under front and rear of cart frame. Once frames are cut the weight of both ends of the now split cart will fall towards the cut. Placing a floor jack along the frame directly under the battery pack will help to avoid pinching the cutting blade by adding tension. Chock front and rear wheels to avoid roll after cut is made.

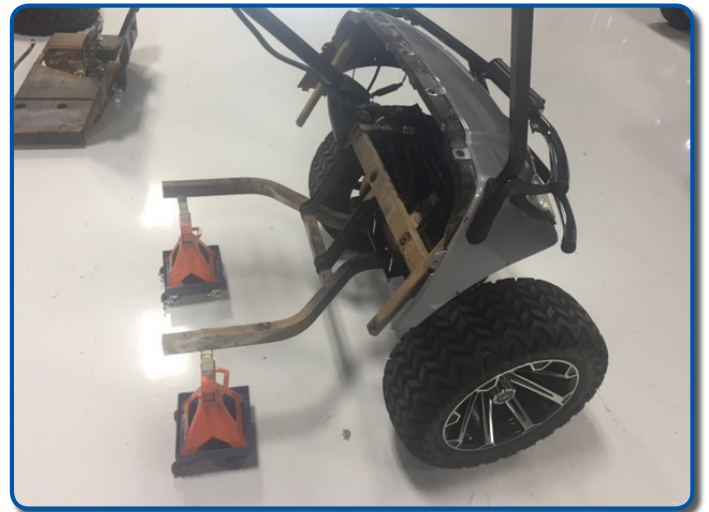




Using a speed square mark frame along cut plastic under body as shown.

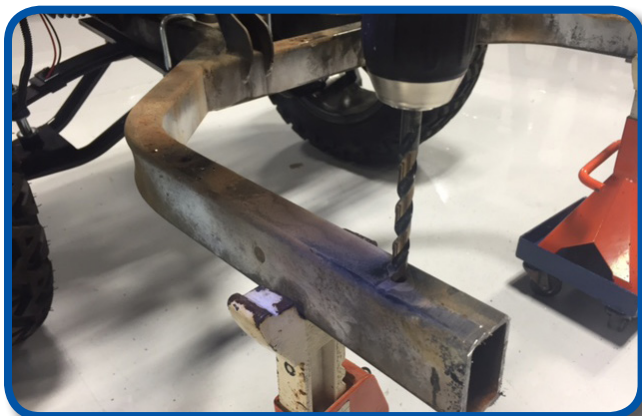
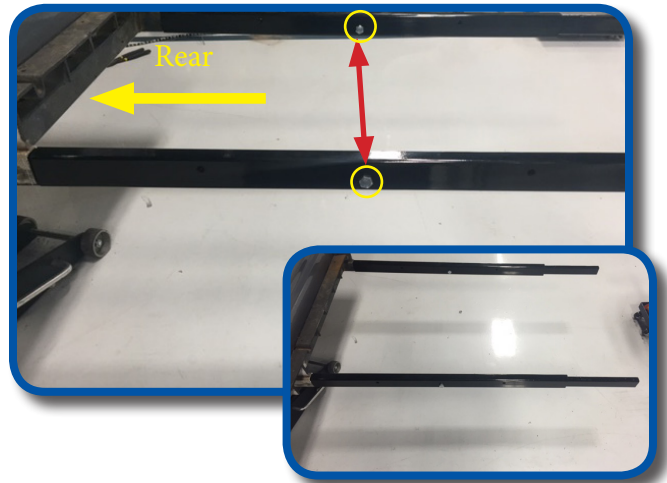


Cut frame. Once frame is cut roll front of car away from rear.



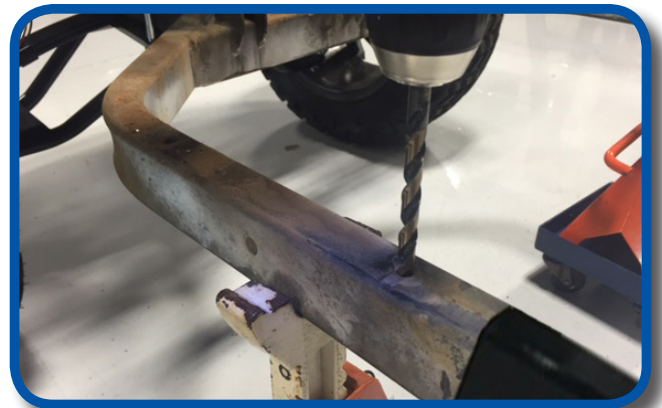
The frame extensions are identical but they are also directional. Insert the end of the extensions with no pre-drilled holes into the rear frame as shown.

***Place a 8x55 bolt into center hole to ensure extension and cover stays in place during the next few steps.

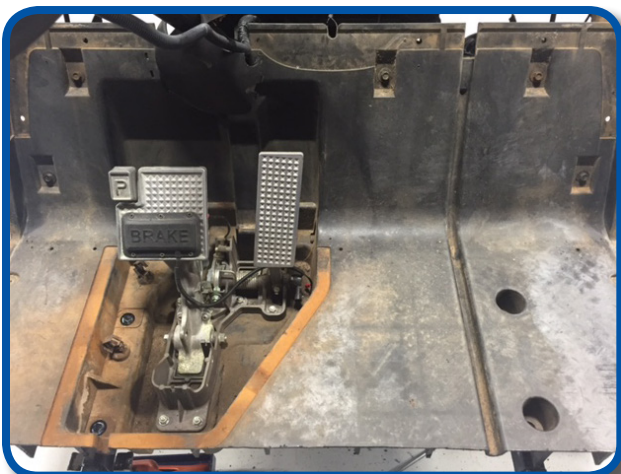


Using a 11/32" bit, drill out tapped holes in front frames to remove debris and allow extensions to fully insert into frame. Once holes are clear roll car front on to extensions.

Ensure frames are tight up against the extrusion cover and holes in side of extensions are properly aligned. Then chock all four wheels to keep both ends in place. Using front frame holes as a guide drill through extensions and lower part of frame with a 11/32" bit as shown.



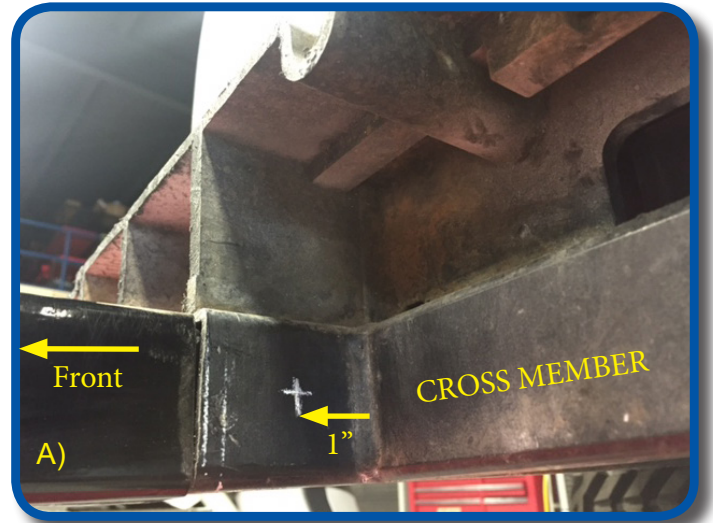
Reattach front floor board using a retained hardware and four 8x75mm bolts from pack 1 using a 14mm socket and 13mm wrench. Use supplied fender washers for top of 8mm bolts.



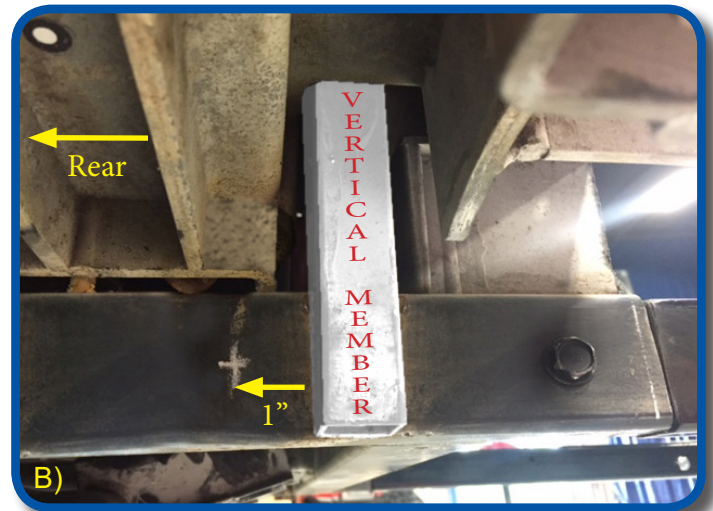
28

To attach the rear end of the extensions you will need to drill two holes in the side of each frame.

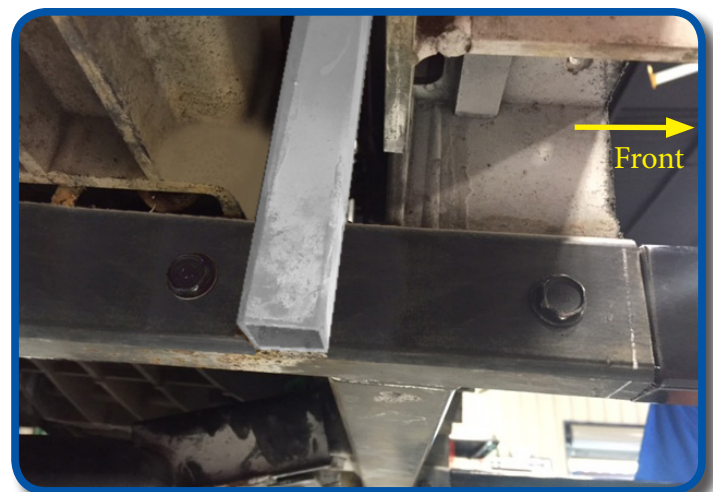
A) First measure 1" from rear cross member toward front and mark a center line as shown. Use a 5/16" bit and drill all the way through frame. Secure with a 8x45mm bolt from Pack 1, repeat on opposite side before drilling second hole.

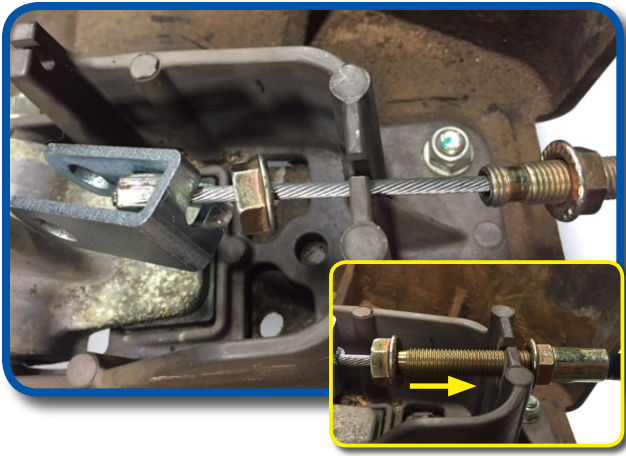


B) Next measure 1" towards rear of cart on opposite side of same cross member. Secure with a remaining 8x45mm hardware from Pack 1 repeat on opposite side.



Repeat on opposite side



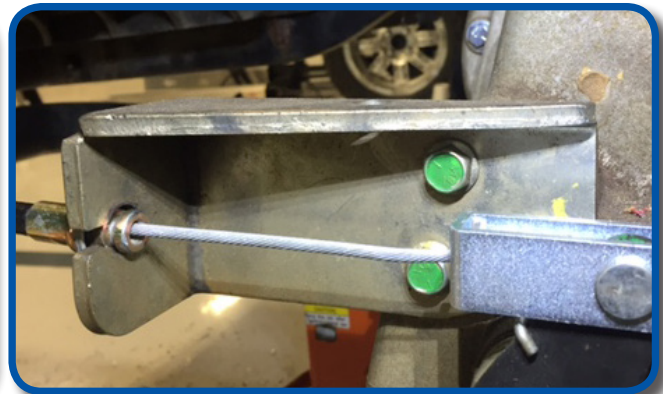
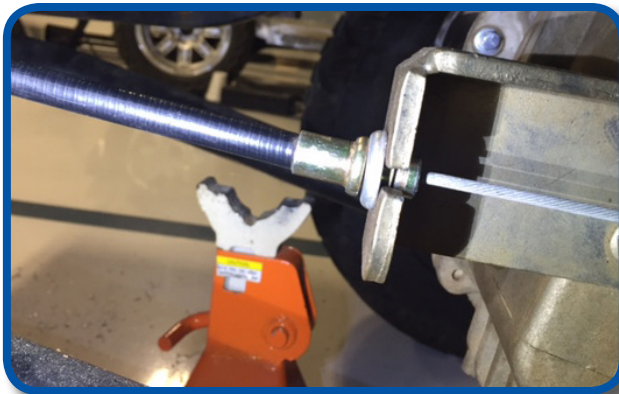
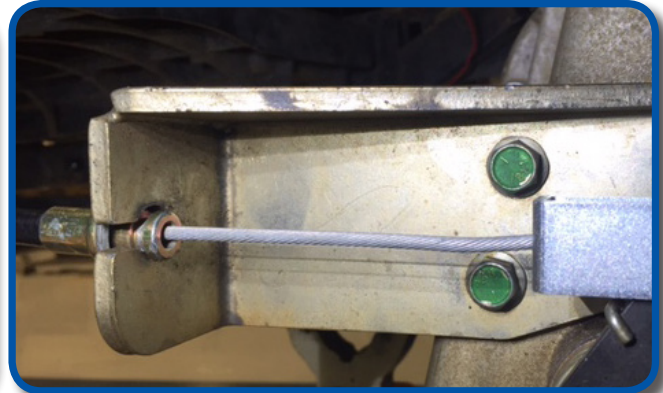
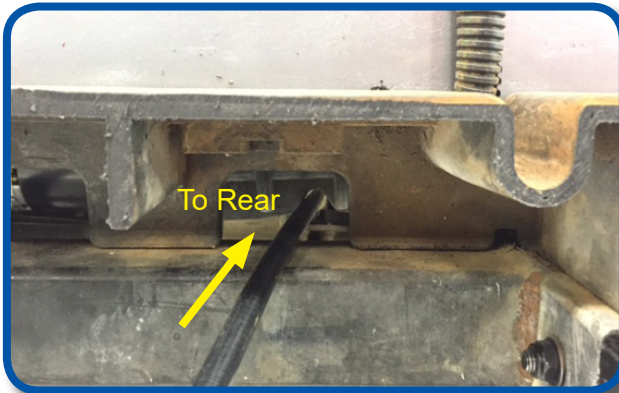


29

Install supplied brake cable by attaching front mount first. Loosen front nut on mount and slide exposed cable in channel of brake bracket. Hand tighten nut until after rear is attached.

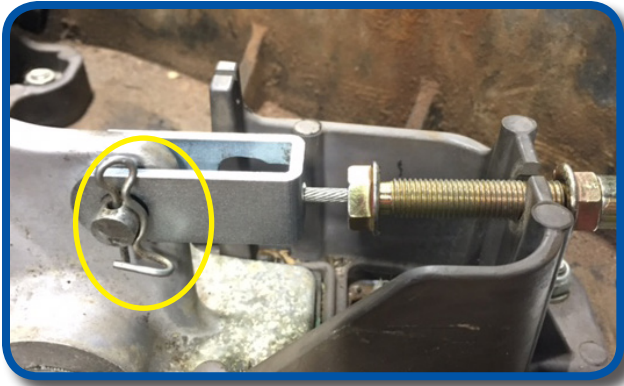
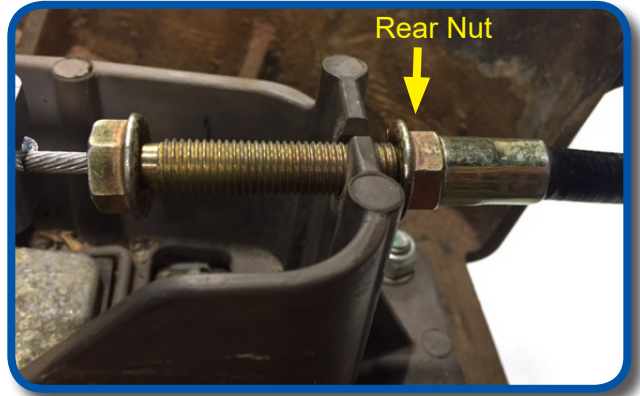
30

On the rear bracket insert exposed cable through channel in bracket and attach mount to brake spring using retained hardware as shown.

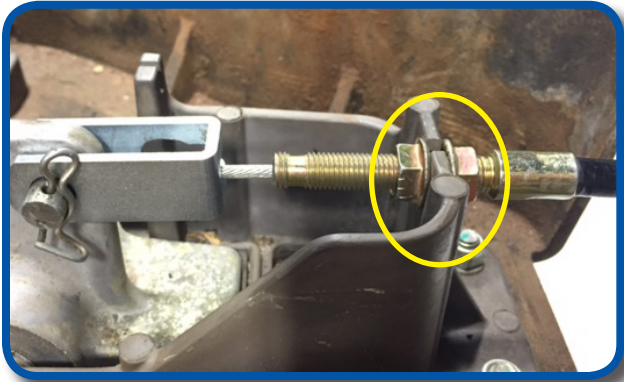


01

Now that rear mount is attached you can secure front mount. Loosen rear nut of mount all the way, this will give you enough slack in the cable to attached front cable mount to brake pedal.

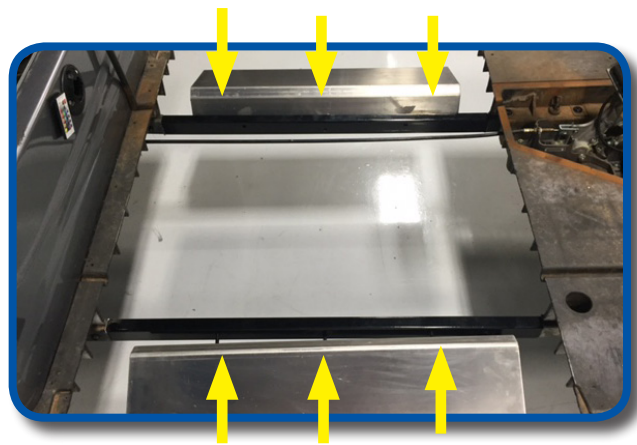


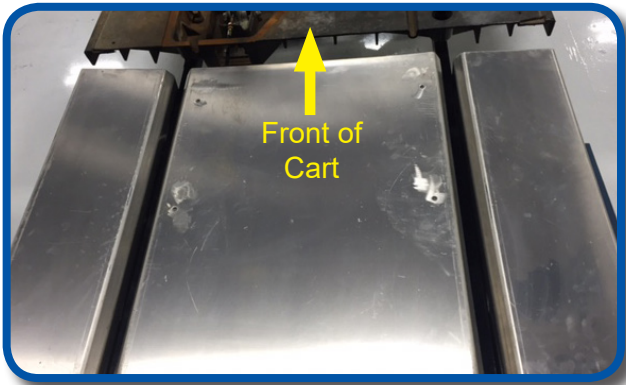
Attach front mount holder using retained pin and cotter pin and tighten both nuts as shown. Be sure to check brake sensitivity and adjust accordingly before moving to next step. You should have three engagement clicks from the parking brake and no more play after click is set.



02

Using the six 8x55mm bolts from Pack 2 attach the side supports to frame extensions. Do NOT push bolt all the way through the frame until next step.

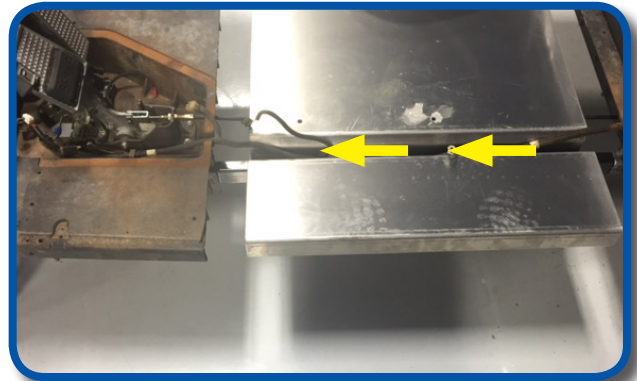




With side supports hanging, slide center floor support between frame rails and push bolts from previous step through frame into center support. Do NOT tighten bolts until all hardware is in place.

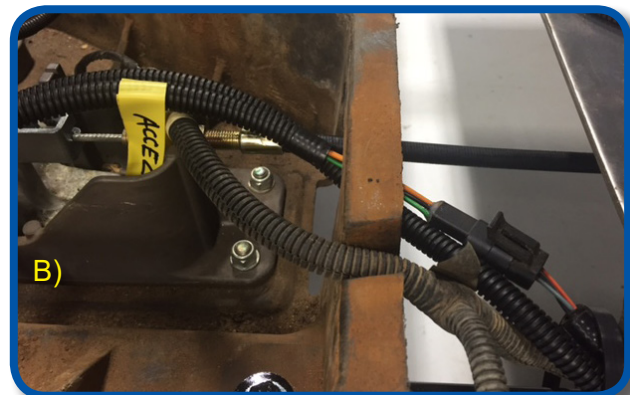
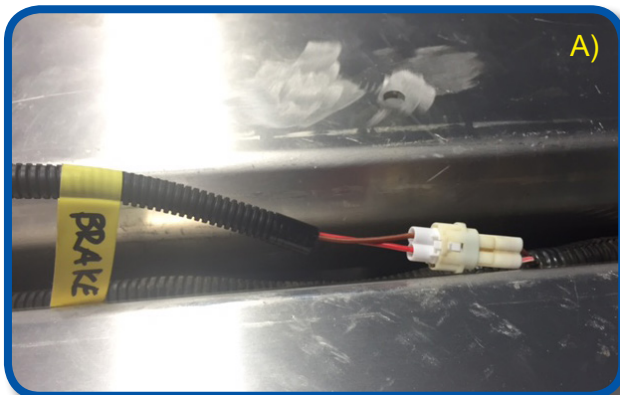
NOTE: Make sure predrilled holes on top of center support are off set to the FRONT of the car.

Run factory harness along driver side of frame extension and into brake access as shown. Secure to frame using supplied zip ties.



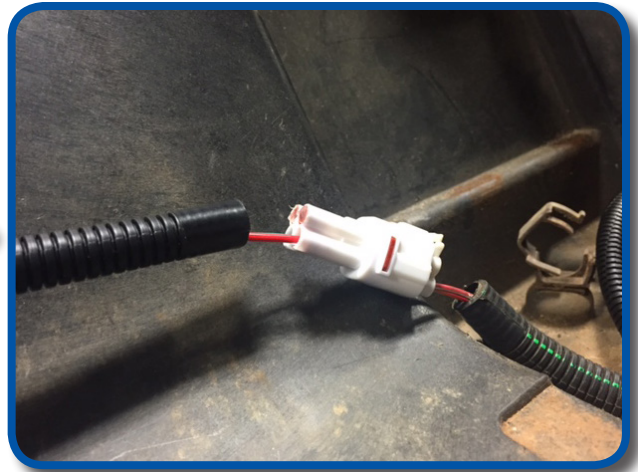
A) Plug in two pin Brake extension harness to factory harness and brake switch.

B) Plug in 3 pin Accelerator extension harness to factory harness and accelerator switch. Route both extension harnesses through brake cable access hole and secure to main harness with zip ties.

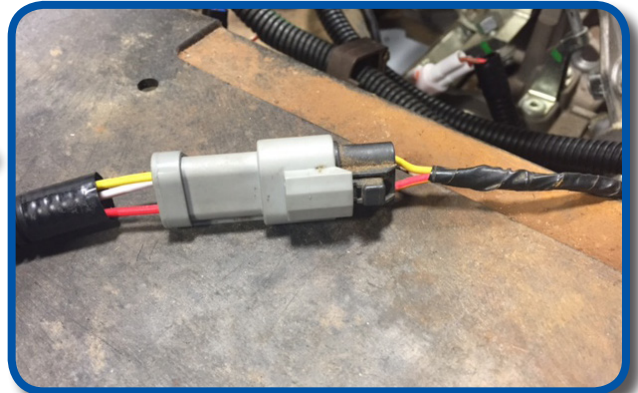


37

A) Plug in key switch extension harness to factory harness and route through access hole to dash.

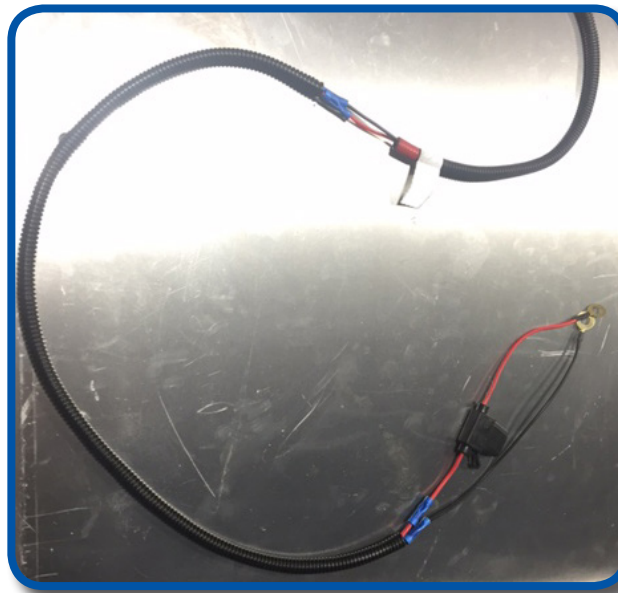
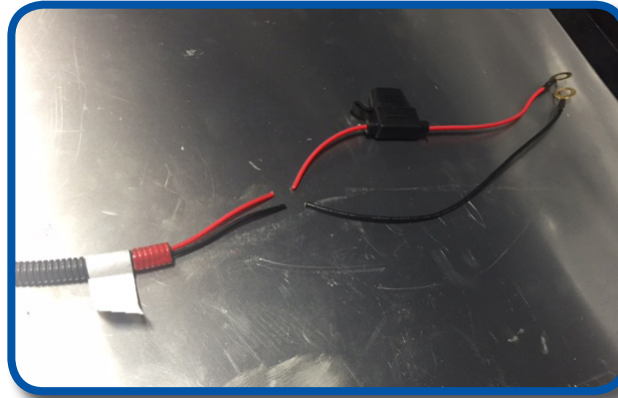
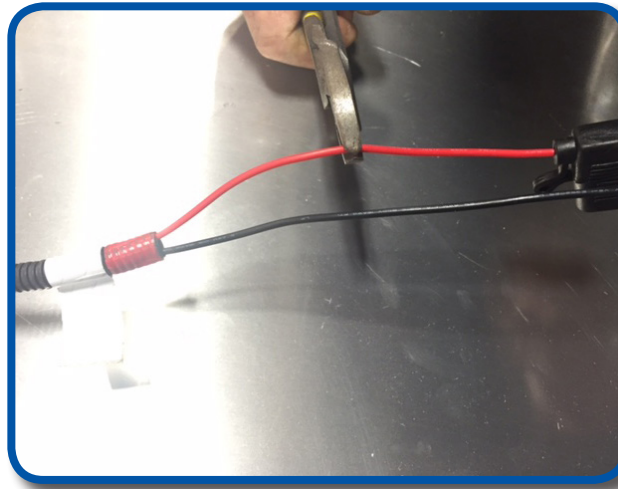


B) Plug in Forward/Reverse extension harness to factory harness and route through access hole to dash.



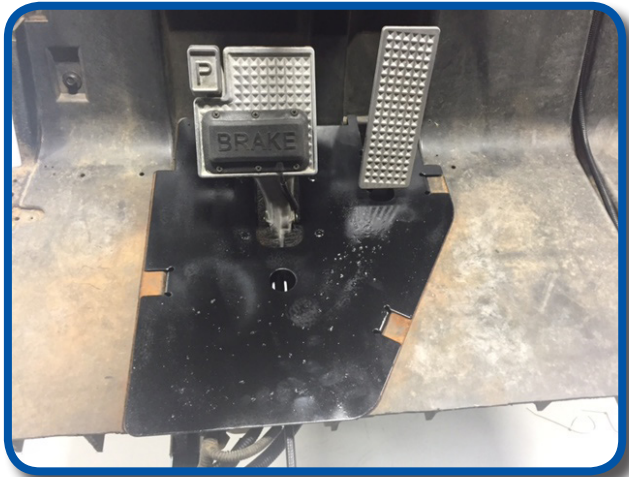
C) Plug in 2 pin Reverse buzzer extension harness to factory and attach to reverse buzzer as shown.





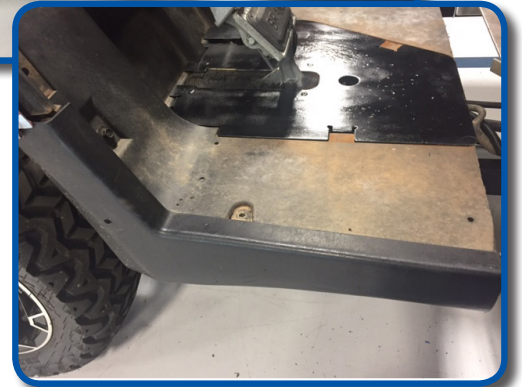
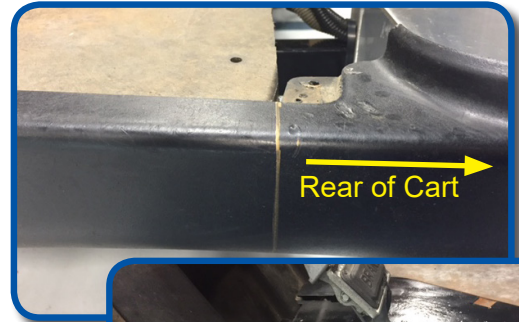
If you are installing or have an existing Madjax or GTW light kit, run harness from front to back. Included in your kit is a 24" red and black 16ga wire loom extension for your light kit power feed. You will need to add this loom to your light kit harness so it will reach the proper 12V battery connections.

For your tail lights we have included tail light extension harnesses. The short red 3 pin harness is for the passenger side, white 3 pin harness is for the driver. If you have a Navitas/Torque controller with a On-the-fly programmer we offer a extended OTF that's 12' 3" long. This is NOT a extension harness, it is a full harness with handheld. Part# 25-041



Once all of your harnesses are in place and secured you can reinstall your brake access cover. You can now reattach your main battery cables as well.

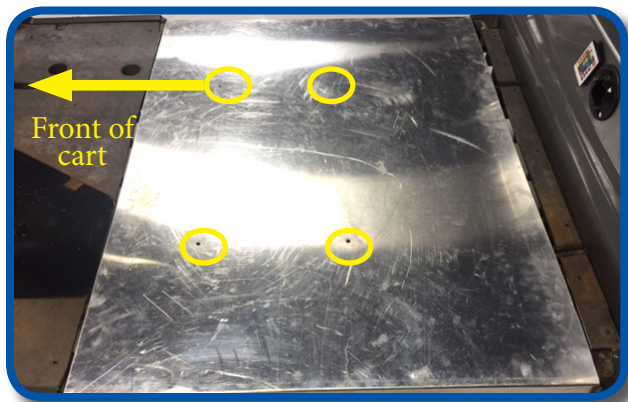
*****We highly recommend testing all your electrical accessories and make sure your car is operational before moving on to next step.**



Place OEM side skirts to the front mounting locations and mark cut line of front underbody as shown using a speed square. Carefully cut side skirt on marked line into two pieces.



Reattach front and rear of side skirts using hardware retained from STEP 9. Remember to secure skirts to mounting tabs under car.

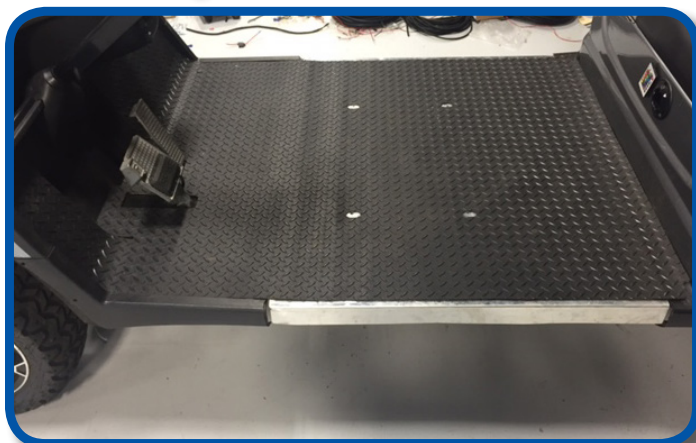
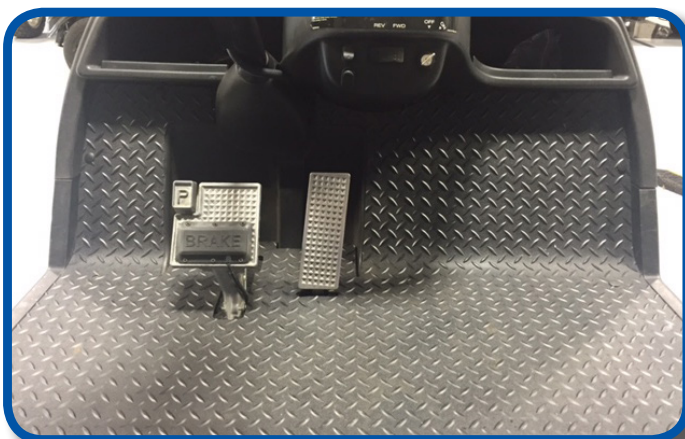


Place floor cover plate over stretch extension section with holes in cover lined up as shown.
NOTE: In order to keep floor holes lined up for next step, temporarily place bolts from Pack 4 into holes but do not tighten.

Using a 3/16" drill bit and 12 rivets from Pack 3 attach center and rear thresholds to floor cover plate and plastic under bodies as shown. Once thresholds are secured remove bolts from floor cover plate.

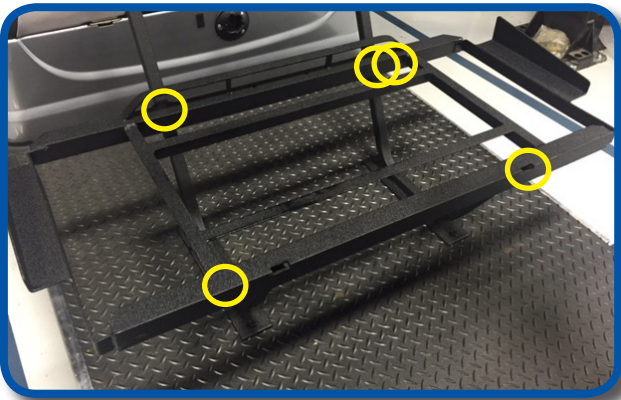
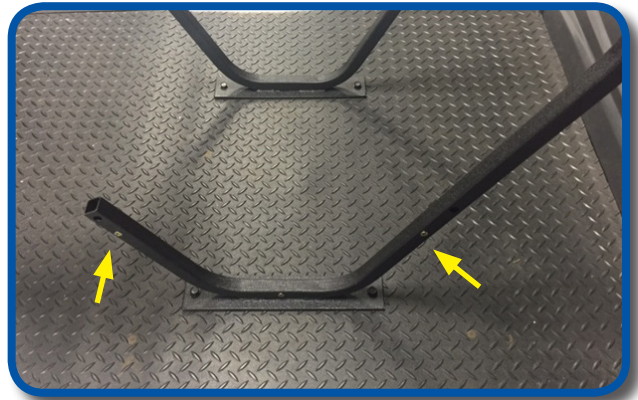


Lay new floor mat across floor board as shown. Secure front floor mat using hardware from STEP 3.



46

Secure seat frame supports to floor board using four 8x35mm bolts and hardware from Pack 4. Do NOT tighten until after STEP 50. Brass nutserts should be facing outside of car as shown.



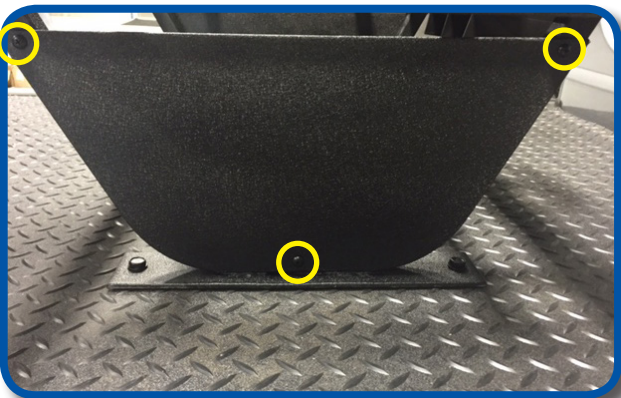
47

Attach seat frame to supports using four 8x45mm bolts and hardware from Pack 4. Tighten hardware.



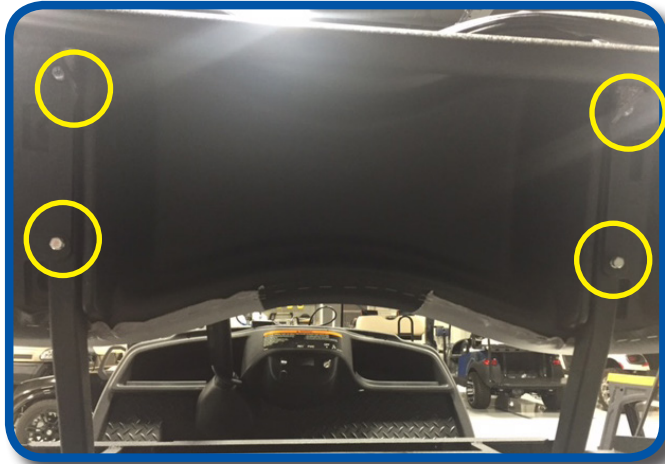
48

Attach rear cup holder to seat frame using two 8x25mm bolts and hardware from Pack 4.



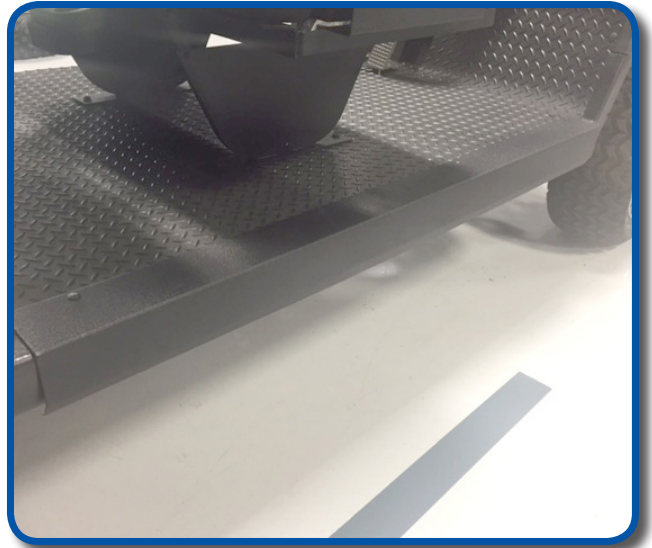
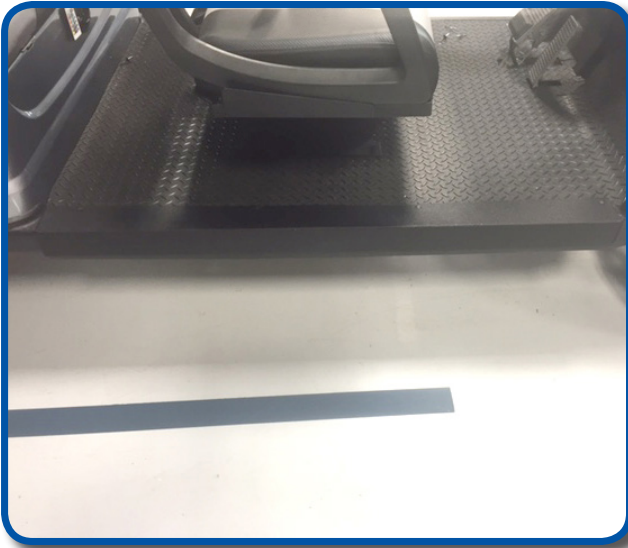
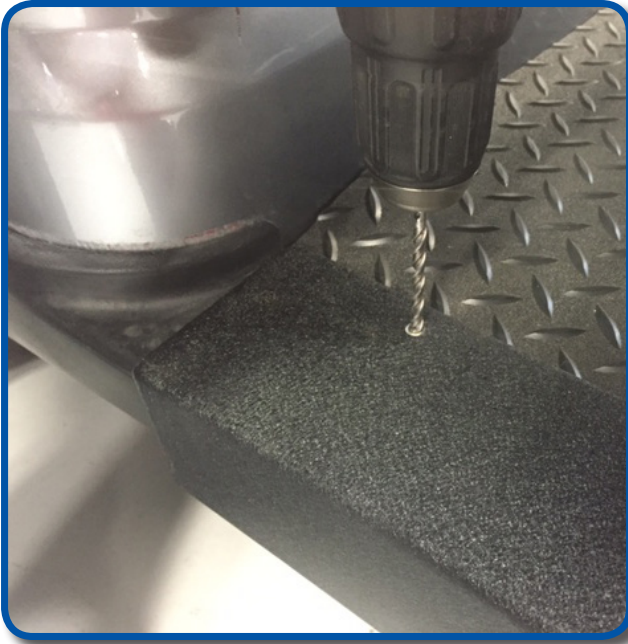
49

Attach seat frame closeouts to supports using six fine thread screws from Pack 5.



Attach grab bar and front seat lean back cushion to supports using four 6x50mm bolts from Pack 5 as shown. You can now tighten all hardware on front seat pod and install front seat bottom.

50



Using a 3/16" drill bit and 8 rivets from Pack 3 attach floor mat retainers as shown. Retainer should be tight up against rear body, start rivets at rear and work to front of car.

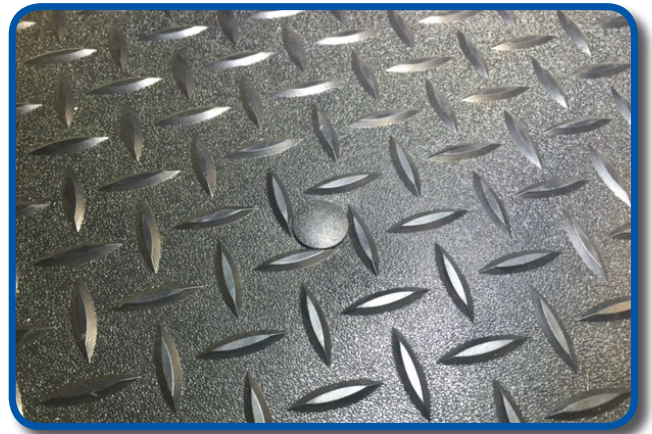
We suggest using a C-clamp to ensure floormat retainers and floor is tightly pressed together. Use a flat metal plate or piece of wood under clamp to avoid damaging the retainers

51



Once side floor mat retainers are attached, use a 3/16" drill bit and remaining rivets and attach rear floor mat retainer to finish floor board.

Extra plastic push rivets are provided with this kit to help secure floor mat to center floor cover. Use a 5/16" bit and drill in center of diamond plate pattern in desired locations to secure. Before drilling ensure there are no wires that can be damaged on underside of floor plate.



INSTALLATION COMPLETE

HARDWARE PACK (DACROMET COATED)

Pack 1

- 4 - 8mm x 75mm Hex head bolts
- 4 - 8mm x 45mm Hex head bolts
- 12 - 8mm x 17mm Flat Washers
- 4 - 8mm x 25mm fender washers
- 8 - 8mm Nylock nuts

Pack 2

- 6 - 8mm x 55mm Hex Head Bolts
- 12 - 8mm x 17mm Flat Washers
- 6 - 8mm Nylock nuts

Pack 3

- 26 - 5mm x 20mm Black Rivets

Pack 4

- 4 - 8mm x 45mm Hex Head Bolts
- 4 - 8mm x 35mm Hex Head Bolts
- 2 - 8mm x 25mm Hex Head Bolts
- 20 - 8mm x 17mm Flat Washers
- 10 - 8mm Nylock Nuts

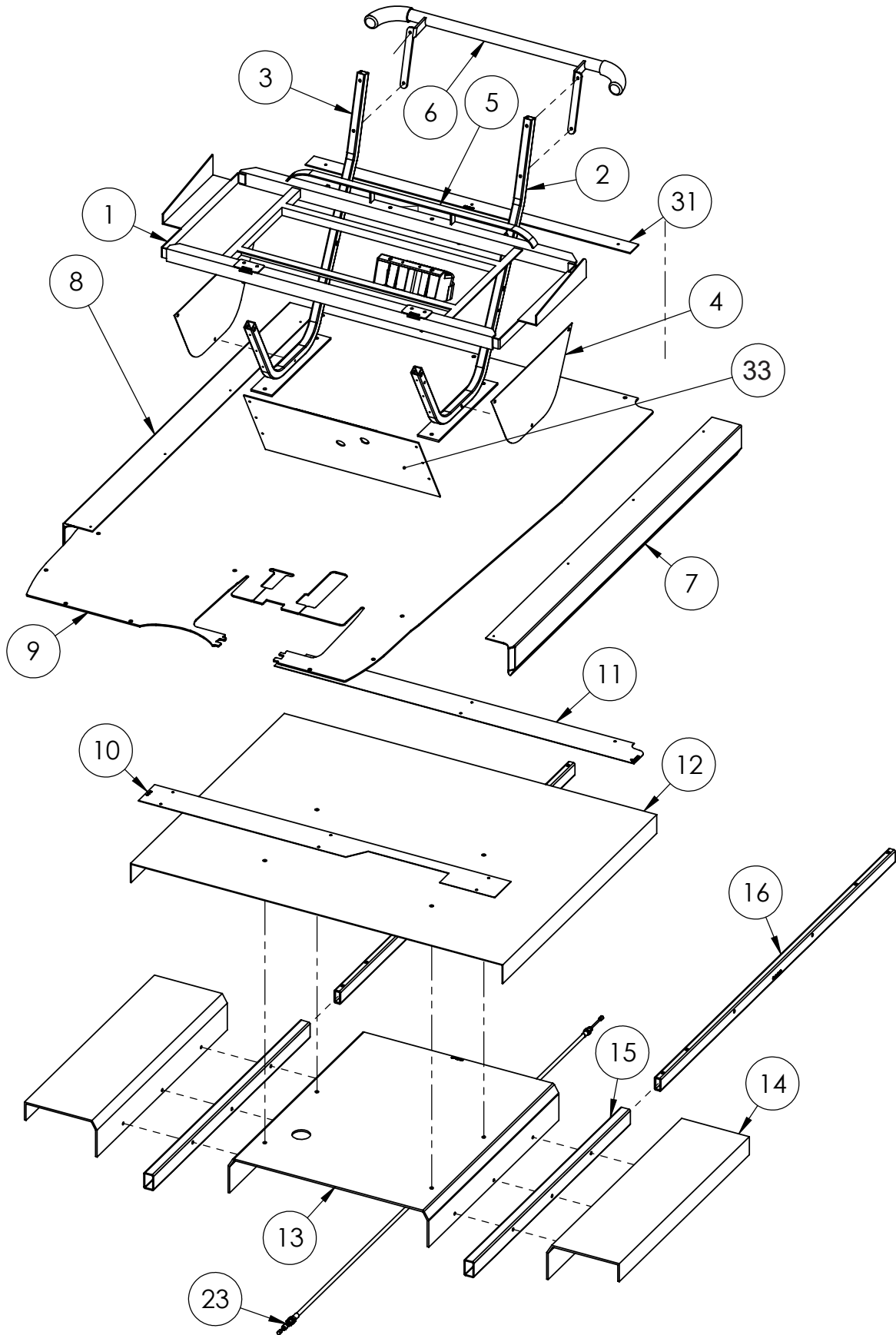
Pack 5

- 6 - 4mm x 15mm Fine thread screws
- 4 - 6mm x 50mm Hex Headbolts
- 4 - 6mm flat washers
- 4 - 6mm lock washers

Pack 6

- 10 - Plastic Rivets

**24-132-1 YAMAHA DRIVE STRETCH KIT
WARRANTY PARTS EXPLODED VIEW DIAGRAM
(See Page 2 for Warranty Part Number Chart)**



24-132-1 YAMAHA DRIVE STRETCH KIT

WARRANTY PARTS EXPLODED VIEW DIAGRAM

See Page 1 for
Exploded View Diagram

ITEM #	DESCRIPTION	PART #	QTY
1	Seat Frame	W24-21-1	1
2	Seat Support Bracket (Driver Side)	W24-21-2	1
3	Seat Support Bracket (Pass Side)	W24-21-3	1
4	Seat Frame Closeout	W24-21-4	2
5	Cup Holder	W17-99-4	1
6	Grab Bar	W24-21-5	1
7	Floor Mat Retainer (Driver Side)	W24-21-6	1
8	Floor Mat Retainer (Pass Side)	W24-21-7	1
9	Diamond Plate Floor Mat	W24-21-33	1
10	Front Threshold	W24-21-8	1
11	Rear Threshold	W24-21-9	1
12	Floor Cover Plate	W24-21-31	1
13	Center Floor Support	W24-21-28	1
14	Side Floor Support	W24-21-32	2
15	Frame Extension Cover	W24-21-30	2
16	Frame Extension	W24-21-29	2
17	Key Switch Extension Harness	W24-21-15	1
18	Brake Switch Extension Harness	W24-21-16	1
19	Accelerator Switch Ext Harness 08-11	W24-21-17	1
20	Forward/Reverse Switch Ext Harness	W24-21-18	1
21	Reverse Buzzer Switch Ext Harness	W24-21-19	1
22	Light Kit Extension Harness	W24-21-20	1
23	Brake Cable	W24-21-21	1
24	Hardware Pack-1	W24-21-22	1
	M8x75 Hex Head Bolts		4
	M8 Fender Washers		4
	M8 Flat Washers		12
	M8 Nylock Nuts		8
	M8x45 Hex Head Bolts		4
25	Hardware Pack-2	W24-21-23	1
	M8x55 Hex Head Bolts		6
	M8 Flat Washers		12
	M8 Nylock Nuts		6
26	Hardware Pack-3	W24-21-24	1
	M5x20 Rivets		12
27	Hardware Pack-4	W24-21-25	1
	M8x45 Hex Head Bolts		4
	M8x35 Hex Head Bolts		4
	M8x25 Hex Head Bolts		2
	M8 Flat Washers		20
	M8 Nylock Nuts		10
28	Hardware Pack-5	W24-21-26	1
	M6x50 Hex Head Bolts		4
	M4x15 Fine Thread Screws		6
	M6 Lock Washers		4
	M6 Flat Washers		4
29	Hardware Pack-6	W24-21-27	1
	Self Tapping #2 Phillips Screws (1")		8
30	Zip Ties (Included in Box)		10
31	Rear Trim Floor Mat Retainer	W24-21-10	1
32	Accelerator Switch Ext Harness 2012+	W24-21-34	1
33	Front Shifter Plate		1