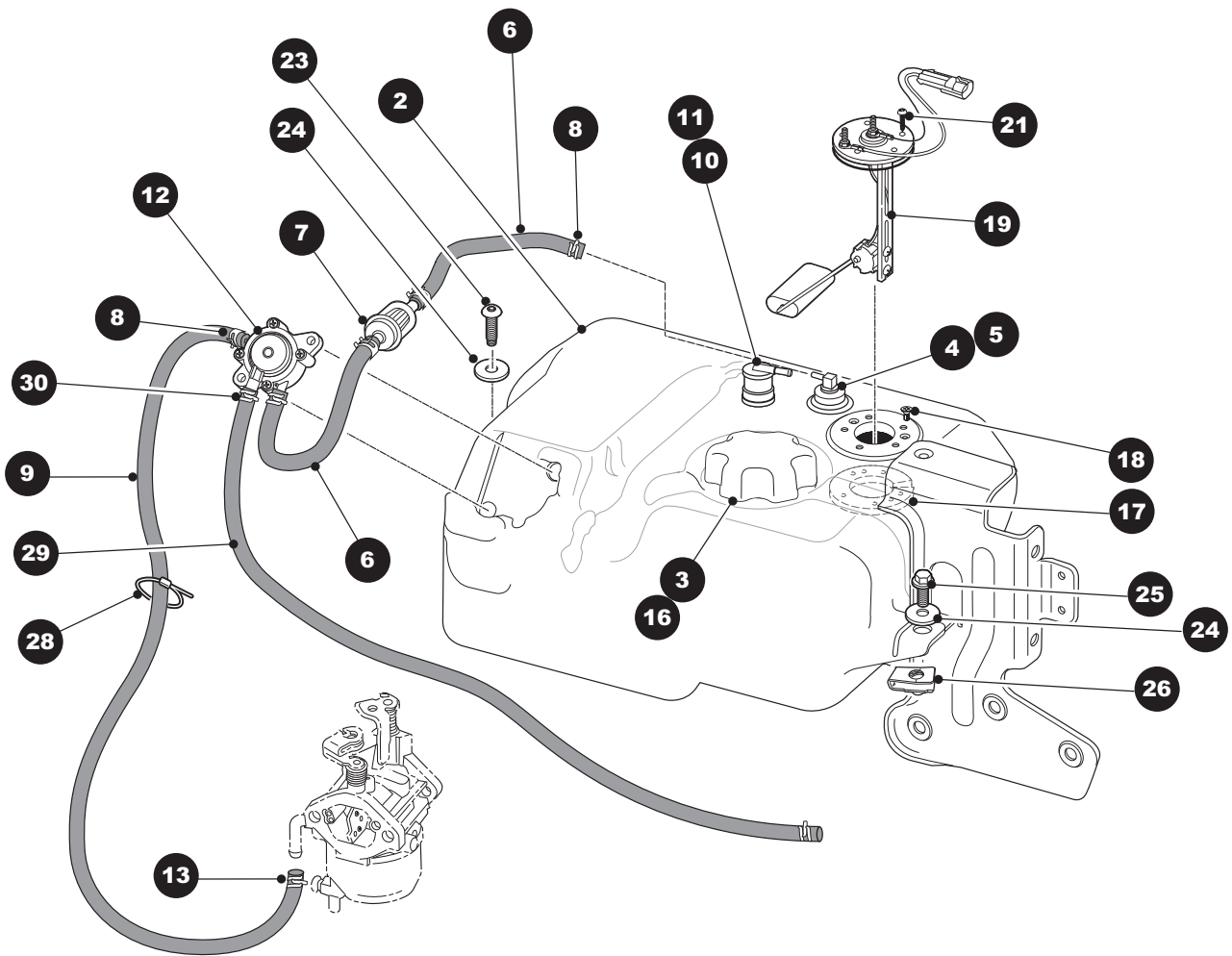


FUEL SYSTEM

1 - Includes Items 2 - 13

15 - Includes Items 3 - 13 & 16 - 21



FUEL SYSTEM

THE USE OF NON U.L. PARTS WILL VOID ANY U.L. LISTING.
 When ordering parts, please specify the model and serial number of the product.
 * Indicates a component that is not available as an individual part.
 G** Indicates consult Customer Service Department for additional information.

| ITEM | PART NO. | 1 2 3 4 5 | DESCRIPTION | QTY. |
|------|----------|-----------|--|-------|
| 1 | 603191 | | FUEL TANK ASSEMBLY | 1 |
| 2 | 600140 | | FUEL TANK | 1 |
| 3 | 620174 | | FUEL TANK CAP | 1 |
| 4 | 18287G03 | | SIPHON TUBE..... | 1 |
| 5 | 70988G01 | | GROMMET | 1 |
| 6 | 17470G1 | | FUEL HOSE, (BULK)..... | 8" |
| 7 | 72084G01 | | FUEL FILTER..... | 1 |
| 8 | 18292G1 | | CLAMP, 1/2"..... | 5 |
| 9 | 17470G1 | | FUEL HOSE, (BULK) (TO CARBURETOR) | 22.5" |
| 10 | 606067 | | ROLLOVER VALVE | 1 |
| 11 | 606068 | | ROLLOVER VALVE GROMMET..... | 1 |
| 12 | 602061 | | FUEL PUMP | 1 |
| 13 | 11391G4 | | CLAMP, 1/2"..... | 1 |
| 14 | | | | |
| 15 | 604018 | | FUEL TANK ASSEMBLY WITH LEVEL SWITCH (INCLUDES ITEMS 3 -12 & 16 - 21) | 1 |
| 16 | 604251 | | FUEL TANK (FOR VEHICLES WITH FUEL GUAGE) | 1 |
| 17 | 72229G01 | | FUEL LEVEL SENDER ADAPTER..... | 1 |
| 18 | 72230G01 | | SCREW, #6 - 32 X 1/2" LG | 2 |
| 19 | 604188 | | FUEL LEVEL SENDER (INCLUDES ITEM 13) | 1 |
| 20 | * | | GASKET | 1 |
| 21 | 72232G01 | | SCREW, #10 x 3/4" LG | 5 |
| 22 | | | | |
| 23 | 605957 | | BOSS SCREW TORX, M8 - 1.25 X 25..... | 1 |
| 24 | 604066 | | WASHER, WASHER M10, 10.5 X 30 | 2 |
| 25 | 603799 | | HEX BOLT, M10 - 1.5 X 25..... | 1 |
| 26 | 603818 | | BARREL CLIP NUT, M10 - 1.5..... | 1 |
| 27 | | | | |
| 28 | 17618G1 | | WIRE TIE | 1 |
| 29 | 27183G01 | | PULSE LINE (BULK), (BLACK WITH WHITE LINE MARKING) | 28" |