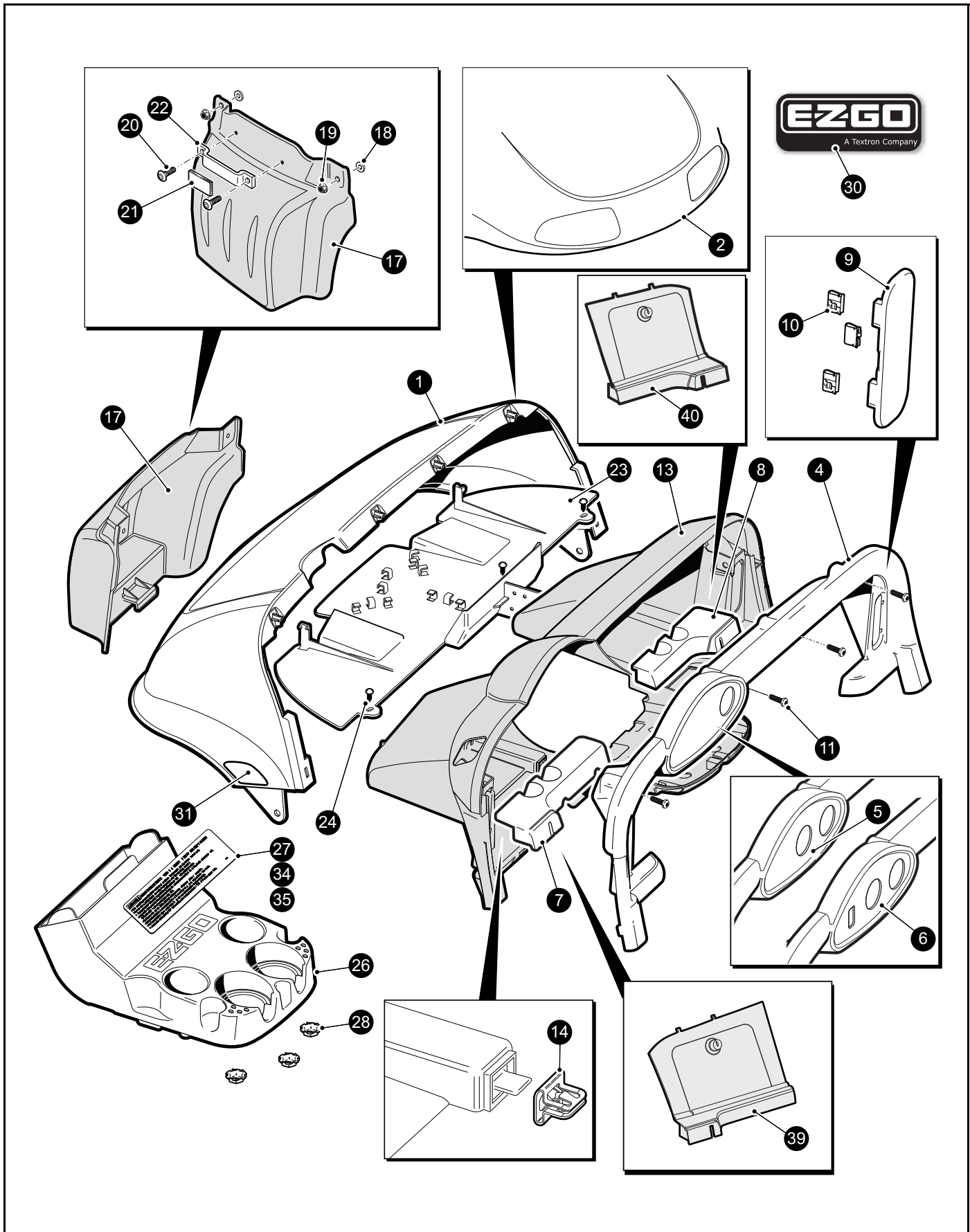


BODY



When ordering parts, please specify the model and serial number of the product.

* Indicates a component that is not available as an individual part.

*** Indicates consult Customer Service Department for additional information.

ITEM	PART NO.	1 2 3 4 5	DESCRIPTION	QTY.
1	6XXXXX***		FRONT COWL, WITHOUT HEADLIGH OPENING (see colors below)	1
			606953 IVORY	
			606954 FORREST GREEN	
			606955 PATRIOT BLUE	
			606956 BLACK	
			606957 MOLTEN RED	
			606958 BRIGHT WHITE	
			606959 FLAME RED	
			606960 STEEL BLUE	
			608476 PLATINUM	
			608477 ALMOND	
			608493 ELECTRIC BLUE	
			608494 INFERNO RED	
2	6XXXXX***		FRONT COWL, WITH HEADLIGHT OPENING (see colors below)	1
			620227 IVORY	
			620228 FORREST GREEN	
			620229 PATRIOT BLUE	
			620230 BLACK	
			620231 MOLTEN RED	
			620232 BRIGHT WHITE	
			620233 FLAME RED	
			620234 STEEL BLUE	
			608478 PLATINUM	
			608479 ALMOND	
			608516 ELECTRIC BLUE	
			608517 INFERNO RED	
3				
4	600242		INSTRUMENT PANEL TRIM, OPENING FOR KEY SWITCH ONLY	1
5	608808		INSTRUMENT PANEL TRIM, OPENING FOR KEY SWITCH & SOC	1
6	608864		INSTRUMENT PANEL TRIM, OPENING FOR KEY SW, SOC & LIGHT SW.	1
7	600243		BALL HOLDER INSERT, DRIVER SIDE.....	1
8	600241		BALL HOLDER INSERT, PASSENGER SIDE	1
9	602388		ACCESS COVER ASSEMBLY (includes item 10)	1
10	602100		U-CLIP	3
11				

BODY

When ordering parts, please specify the model and serial number of the product.

* Indicates a component that is not available as an individual part.

*** Indicates consult Customer Service Department for additional information.

ITEM	PART NO.	1 2 3 4 5	DESCRIPTION	QTY.
12				
13	602387		INSTRUMENT PANEL (includes item 14)	1
14	602184		SPRING CLIP	4
15				
16				
17	605935		FRONT BUMPER	1
18	604066		FLAT WASHER, M10 (O.D. 30, I.D. 10.5, THK. 1.75).....	1
19	600525		FLANGED HEX NUT WITH PLASTIC INSERT, M10-1.5.....	1
20	608290		PAN HEAD PHILLIPS SCREW, #10 - 16 SELF TAPING	2
21	14382G7		NOISE SUPPRESION STRIP	1
22	608469		COWL SUPPORT	1
23	601634		FRONT SPLASH GUARD	1
24	16816G2		CHRISTMAS TREE RIVET (.25 x .88)	3
25				
26	602101		CUPHOLDER ASSEMBLY (includes item 27)	1
27	608522		WARNING AND INSTRUCTION DECAL.....	1
28	71597G01		SELF THREADING NUT	3
29				
30	606405		E - Z - GO NAMEPLATE	1
31	608991		YELLOW REFLECTOR, FRONT	2
32				
33				
34	608528		WARNING AND INSTRUCTION DECAL (Freedom vehicles)	1
35	608701		WARNING AND INSTRUCTION DECAL, PICTOGRAMS (CE vehicles).....	1
36				
37				
38				
39	607533		GLOVE BOX, DRIVER SIDE.....	1
40	607131		GLOVE BOX, PASSENGER SIDE	1
41				
42				